

# Hazards Profile



**NOAA Coastal Services Center**  
LINKING PEOPLE, INFORMATION, AND TECHNOLOGY

# Hazards Profile

## Objective:

- To identify key hazards issues and priorities
- Identify information gaps to address these concerns

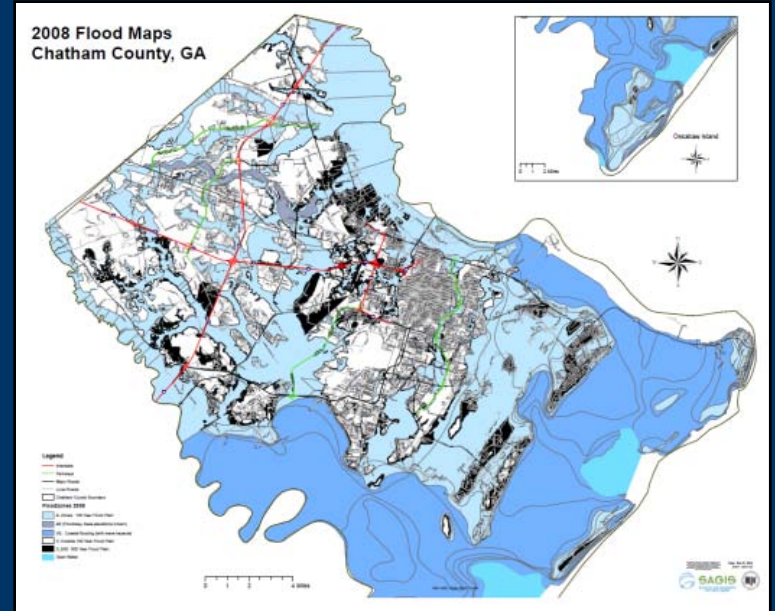


# Hazards Profile

- How do relevant hazards affect your community?
  - Where?
  - How often?
  - In what ways?
- Which current and projected hazard trends are you most concerned about affecting your community?

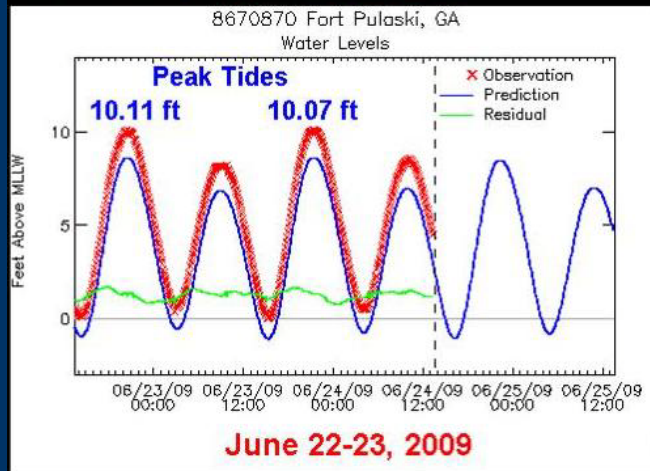


# Flooding



# Shallow Coastal Flood

**Observed Tide Levels for Fort Pulaski**  
**Severe Flooding begins: 10.0 ft MLLW**

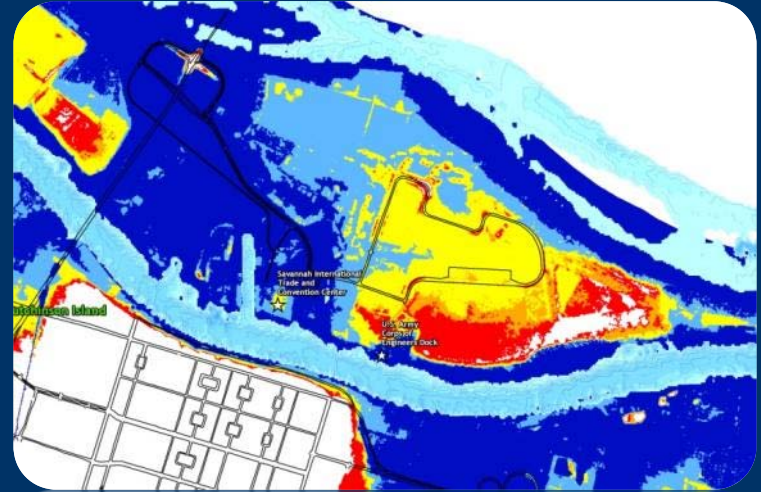


- Extreme Tidal Conditions
- Elevated Stream levels
- Heavy Precipitation
- Storm Surge



# Storm Surge Inundation

- Hurricanes
- Nor'easters
- Distant Storms

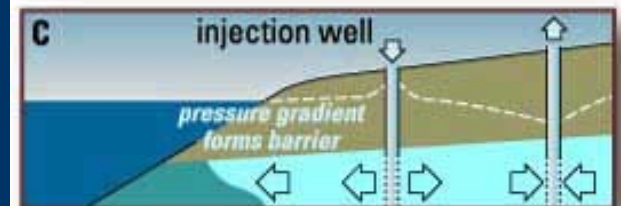
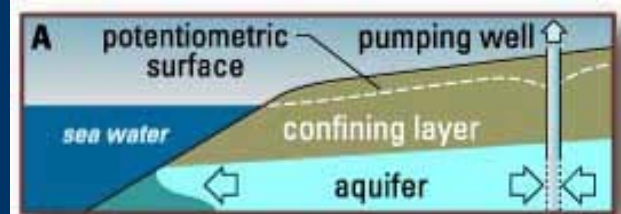
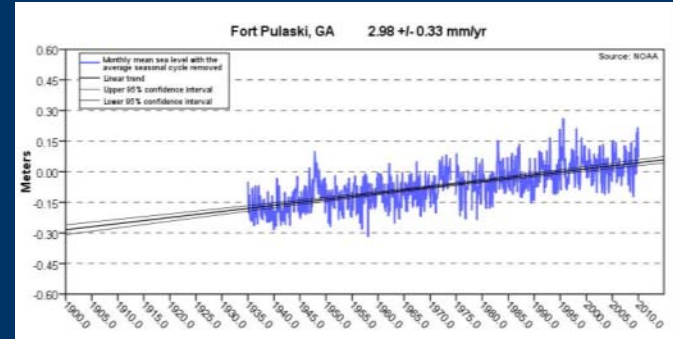


# Erosion



**NOAA Coastal Services Center**  
LINKING PEOPLE, INFORMATION, AND TECHNOLOGY

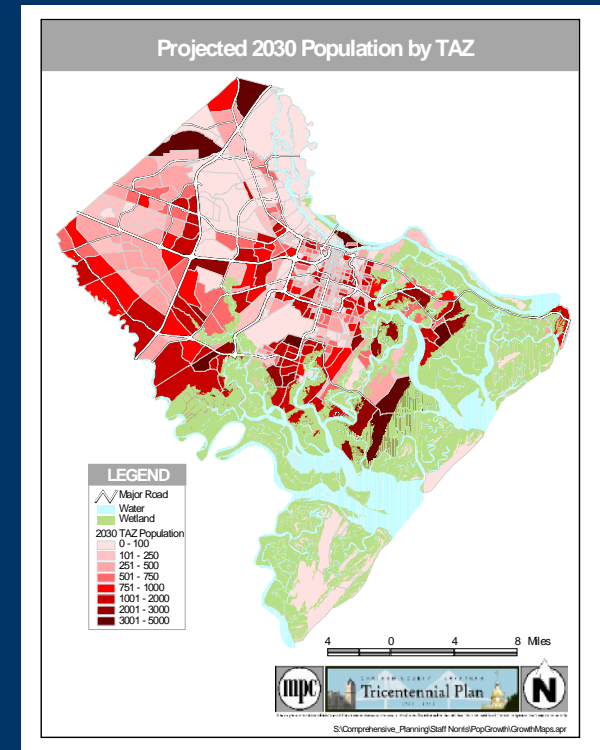
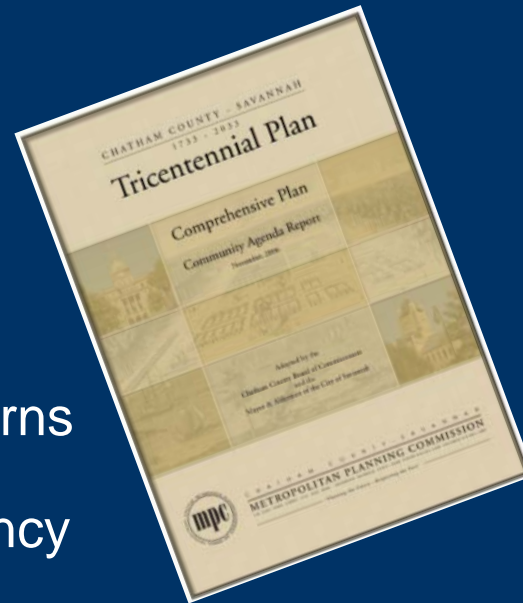
# Salt Water Intrusion



# Future Hazards Considerations



- Change in Rainfall patterns
- Change in storm frequency
- Sea Level Rise Trends
- Change in Development → Change in Floodplain





# Your Charge

Considering the identified priority hazards...

- How do relevant hazards affect your community (where, how often, and in what ways)?
- Identify specific information gaps needed to better understand your hazards issues.

